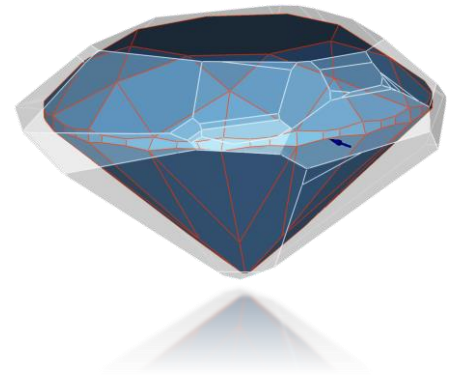


February 2015



1	PREFACE	2
2	OPERATING SYSTEM	2
2.1	Supported Operating Systems	2
2.2	64 bit installation	2
3	HARDWARE SUPPORT	3
3.1	Officially supported Sarine machines:	3
3.2	Unsupported Sarine machines:	3
3.3	New Drivers	3
4	SOFTWARE SUPPORT	4
4.1	GIA® Facetware.....	4
4.2	H&A 2.0	4
4.3	New Reports & New Accessors	5
4.4	Grading Editor.....	5
4.5	Editions.....	6

1 Preface

This Document is intended for Technical, Support or IT engineer.

It concerns new, need to know, features and information concerning Instructor™ 3.5 support.

For other documents, please review below:

- Instructor™ 3.5 Release Notes
- Instructor™ 3.5 Installation Guide
- Axiom calibration Technical guide
- Guides and How-to clips <http://www.youtube.com/user/SarinTechnologiesLtd/videos>



2 Operating System

2.1 Supported Operating Systems

Instructor™ 3.5 only supports **Windows 7 32/64 bit** operation system.

Instructor™ 3.5 does not Support Win XP Operating System

2.2 64 bit installation

Instructor™ 3.5 is installed under, **Windows 7 – 64 bit**, as a **32 bit** application.

3 Hardware Support

3.1 Officially supported Sarine machines:

Instructor™ 3.5 supports the following Sarine machines:

- ✓ **DiaMension™ AXIOM**
- ✓ **DiaMention™ HD**
- ✓ **DiaScan™ S+**
- ✓ **DiaExpert™**
- ✓ **DiaExpert-Eye™**
- ✓ **DiaMobile™ XL**
- ✓ **DiaMension™ Lab Edition Domino (Melody)** - See [Domino Official support](#) section

It is highly recommended for users to only work with these machines.

3.2 Unsupported Sarine machines:

Instructor™ 3.5 does not support the following Sarine machines:

- ✗ **DiaExpert-XL™**
- ✗ **Old DiaMension (Metror2 grabber, old systems)**

3.3 New Drivers

Following new drivers will upgrade with updated version:

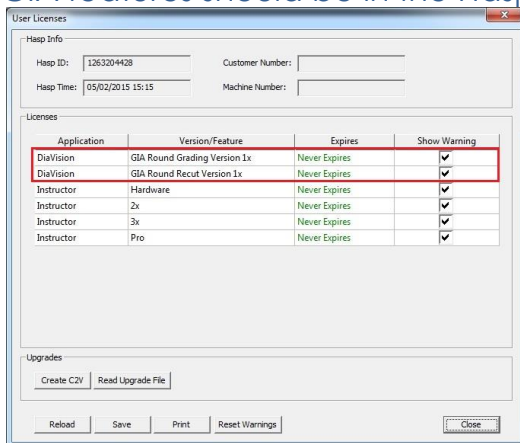
- BDR (CP210x USB to UART Bridge) 6.7
- Piccolo \ Domino 6.9.2.2305
- uEye 4.50
- Hasp 6.63

4 Software Support

4.1 GIA® Facetware

The GIA Facetware® now requires a separate settings to be enabled, in order to use the GIA Facetware® 2 conditions need to take place:

1. GIA features should be in the Hasp (as before)



2. Use the *new* GIA installation CD and click setup.exe
(Note* GIA CD is a shared CD for both Instructor and Advisor)

4.2 H&A 2.0

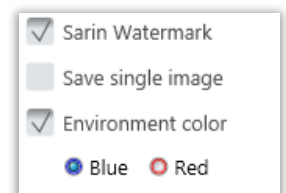
In order to use the H&A 2.0 features, the following is a must:

NVidia® GeForce GT 430 – 96 CUDA Cores, 1 GB of Memory or higher.

Note: Others greater NVidia Cards with equals or more than 96 CUDA Core are supported as well. E.g. NVidia GeForce GT 440 (96 CUDA Core).

4.2.1 New H&A Config

The new H&A module can be controlled with 3 new settings, the Settings\Options menu.



4.2.2 NVidia Driver

NVidia correct and most updated driver is very important check.

Please got to [Nvidia website](http://www.nvidia.com) to allowed the most appropriate driver

4.3 New Reports & New Accessors

Instructor 3.5 now ships with 3 new **Reports** out of the box:

1. New Accessors – summary of new Accessors with explanation of how to use them.
2. GIA grades – includes a summary of all GIA grading Accessors
3. Fancy detailed reports – a new, comprehensive generic report to include all facet info.

4.4 Grading Editor

Instructor™ 3.5 includes new **Grading editor** (under 'Settings' menu) to setup and customize grading rules.

The new grading editor backward supports old grading systems. **Import** old grading system can be done either automatically with the [import] button in the editor or manually (see below).

4.4.1 Manually import old grading-system

1. Copy the old grading-data files (Institute, SGRules, TGRules, DataDef, PolishSettings) to the new 3.5 grading data folder.
2. Edit the *ShapeInstituteTemplateMap.xml* file to include a new <institute> entry with direction to the imported grading-system name.

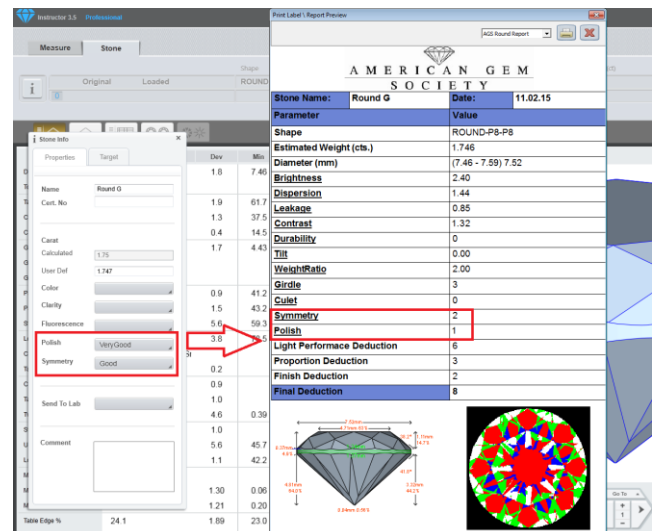
4.5 AGS PGS support

Instructor 3.5 support the American Gem Society (AGS) cut grading system PGS software add-on (sold separately).

The AGS PGS is a report that can be viewed on the Print-preview window under "AGS Round Report".

The two external PGS input parameters: **Symmetry** and **Polish**, are now controlled via the Stone-properties window.

User needs to set the two parameters prior the "AGS Round Report" initialization.

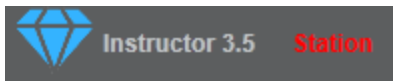


4.6 Editions

Instructor™ 3.5 comes in 4 different editions: **Basic, Standard, Station** and **Professional**.

For more info on the different editions please see the Release notes. Below are the HASP show for each edition

4.6.1 Instructor™ Station

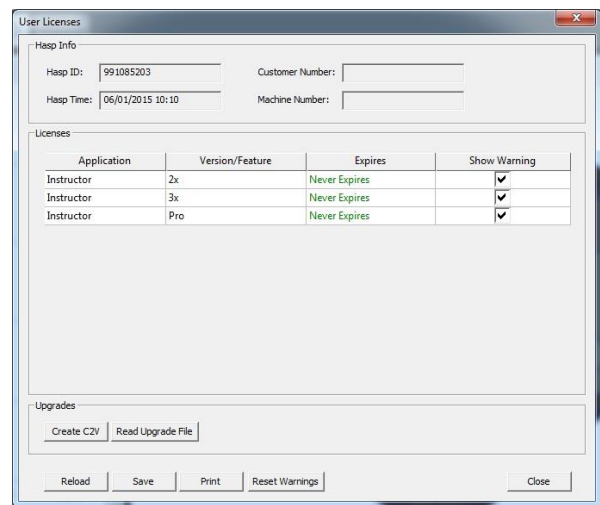


Splash screen

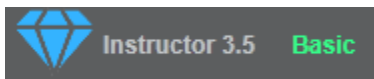
INSTRUCTOR™ 3.5
STATION EDITION



Hasp view

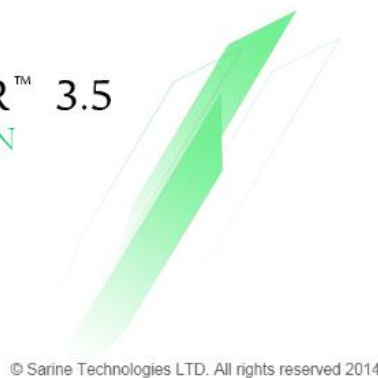


4.6.2 Instructor™ Basic

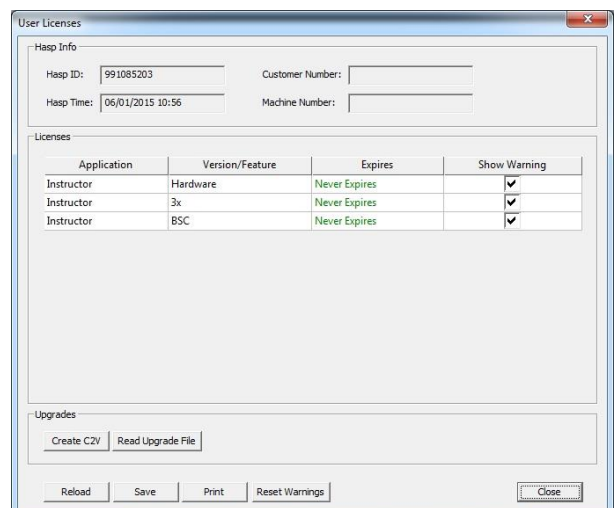


Splash screen

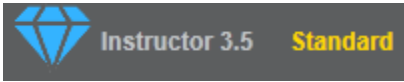
INSTRUCTOR™ 3.5
BASIC EDITION



Hasp view



4.6.3 Instructor™ Standard



Splash screen

INSTRUCTOR™ 3.5
STANDARD EDITION

© Sarine Technologies LTD. All rights reserved 2014

Hasp view

User Licenses

Hasp Info

Hasp ID: 991085203 Customer Number:

Hasp Time: 06/01/2015 10:54 Machine Number:

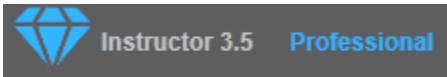
Application	Version/Feature	Expires	Show Warning
Instructor	Hardware	Never Expires	<input checked="" type="checkbox"/>
Instructor	2x	Never Expires	<input checked="" type="checkbox"/>
Instructor	Standard Edition	Never Expires	<input checked="" type="checkbox"/>
Instructor	3x	Never Expires	<input checked="" type="checkbox"/>
Instructor	STD	Never Expires	<input checked="" type="checkbox"/>

Upgrades

Create CZV Read Upgrade File

Reload Save Print Reset Warnings Close

4.6.4 Instructor™ Professional



Splash screen

INSTRUCTOR™ 3.5
DIAMOND STUDIO

© Sarine Technologies LTD. All rights reserved 2014

Hasp view

User Licenses

Hasp Info

Hasp ID: 991085203 Customer Number:

Hasp Time: 06/01/2015 10:08 Machine Number:

Application	Version/Feature	Expires	Show Warning
Instructor	Hardware	Never Expires	<input checked="" type="checkbox"/>
Instructor	2x	Never Expires	<input checked="" type="checkbox"/>
Instructor	3x	Never Expires	<input checked="" type="checkbox"/>
Instructor	Pro	Never Expires	<input checked="" type="checkbox"/>

Upgrades

Create CZV Read Upgrade File

Reload Save Print Reset Warnings Close